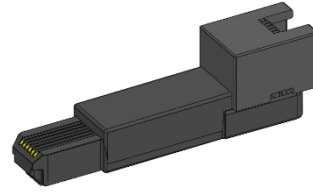


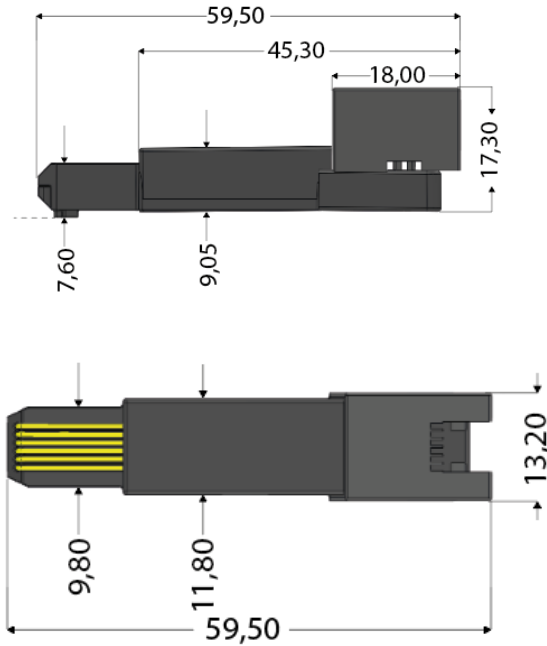
## ARF TEST Datasheet – RJ11 Connector – ARF 201 006 RJ11

### ARF 201 006 RJ11

Test Connector RJ11



#### Mechanical Dimensions (in mm)



#### General specifications

##### Dimensions

Length	59,50 mm
Height	18,20 mm
Wide	13,20 mm

##### Mechanical Specifications

Connection Type	RJ11 Male
DUT / Test Item	RJ11 Female

##### Electrical Specifications

Continuous Current	1 A
typ. Contact Resistance	20,00 mOhm
Operating Voltage VAC / VDC	25 VAC / 60 VDC
Data Transmission Rate	100 MBIT/S

##### Accessories

Floating Holder	ARF H 201
-----------------	-----------

##### Guarantee

Service Life	60,000 cycles
--------------	---------------

**NB: This connector should not be used manually; the plugin must be mechanically automated.**